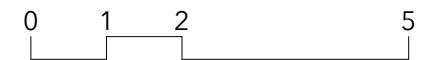
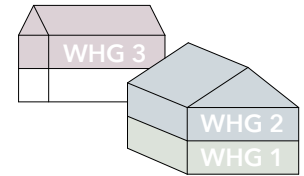
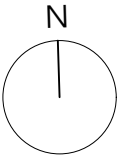
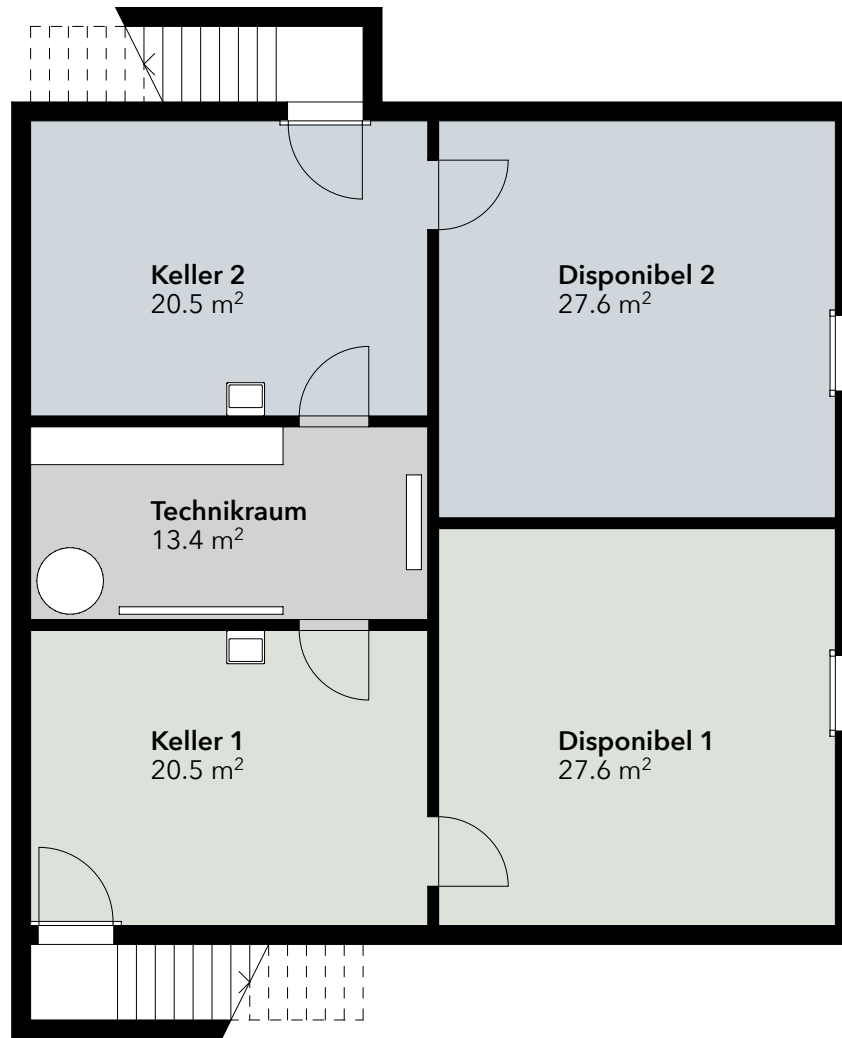
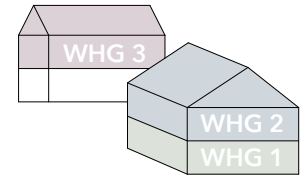
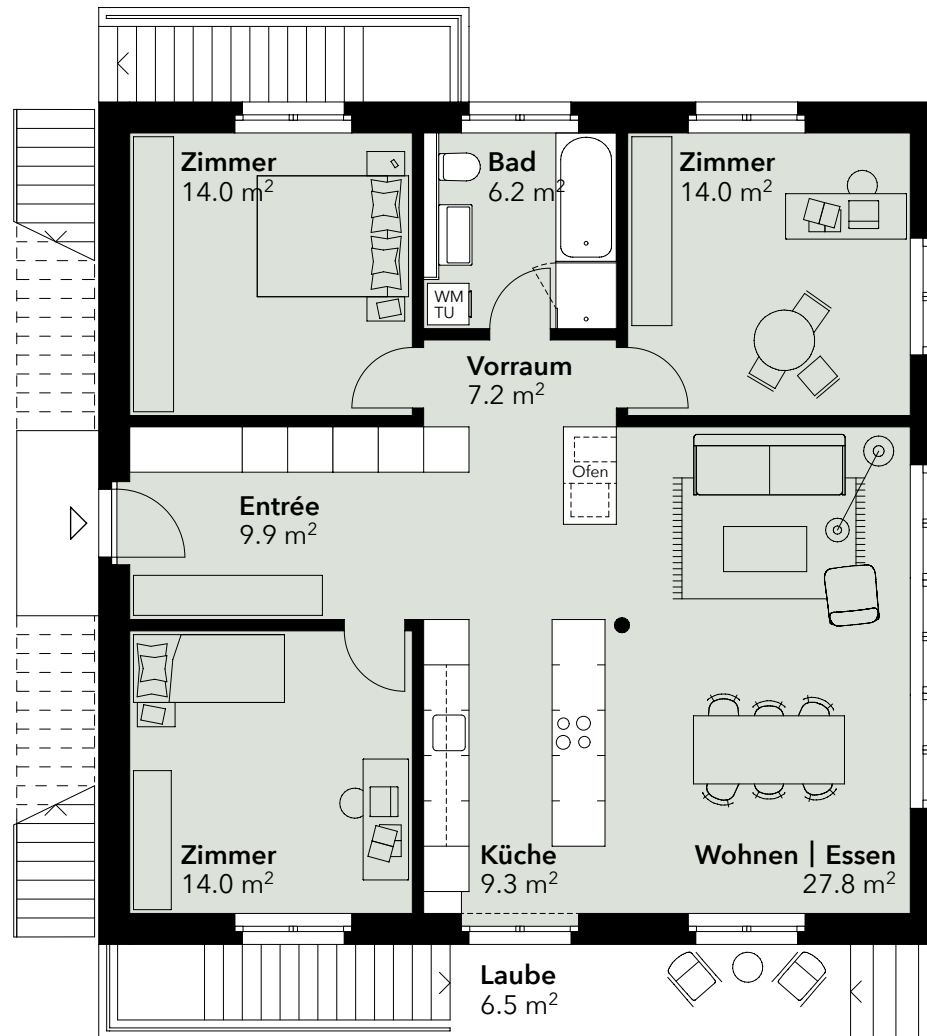
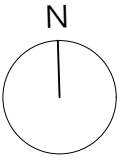




Rüteli 18 + 20 | Umgebung

Bebauung Rüteli, Giswil
21.07.24 | 1:400 (A4)

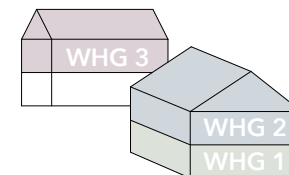
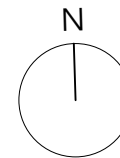
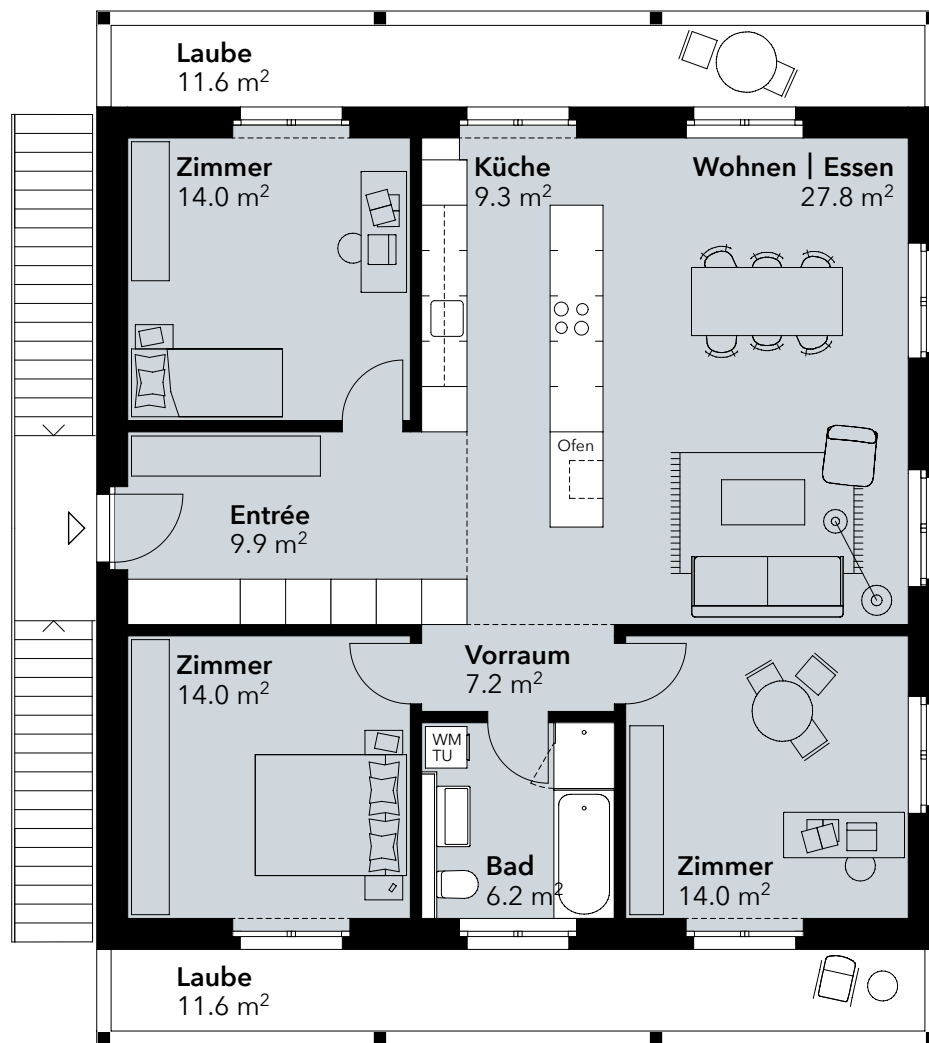




Sitzplatz
ca. 60 m² + ca. 240 m² Rasenfläche

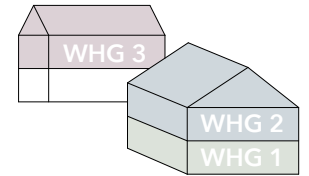
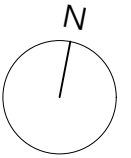
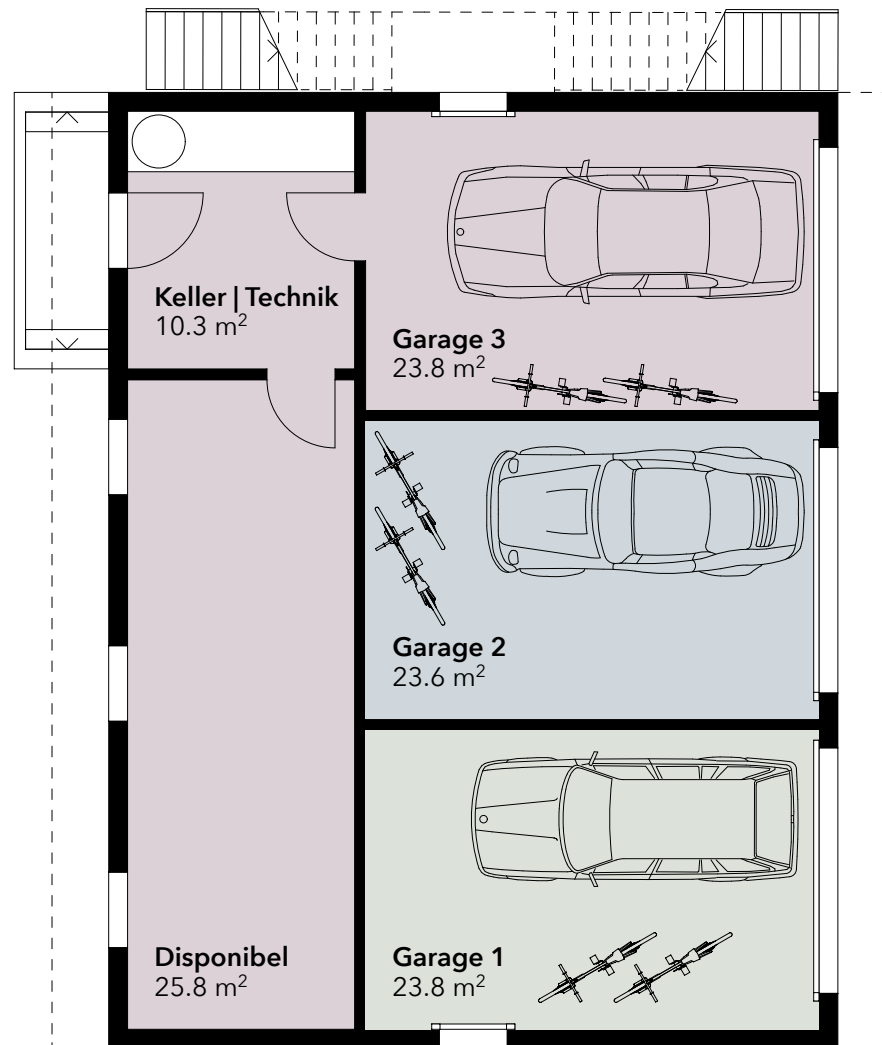
Wohnfläche = 106.7 m² + 27.6 m² Disponibelraum

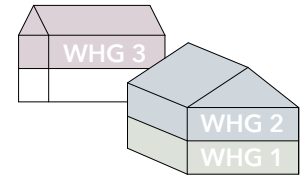
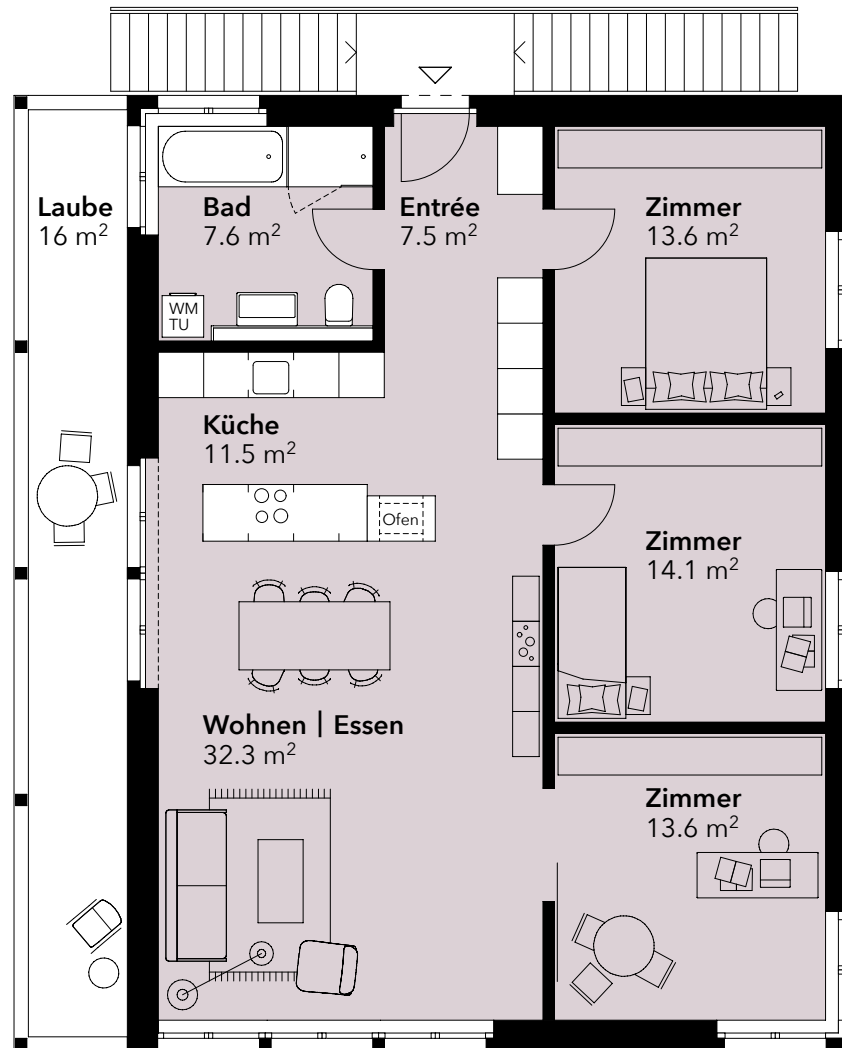
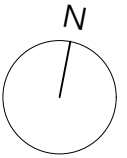




Wohnfläche = 106.7 m² + 27.6 m² Disponibelraum
 Sitzplatz = ca. 60 m² + ca. 140 m² Rasenfläche







Wohnfläche = 104.5 m² + 25.8 m² Disponibelraum
Sitzplatz = ca. 60 m² + ca. 250 m² Rasenfläche

